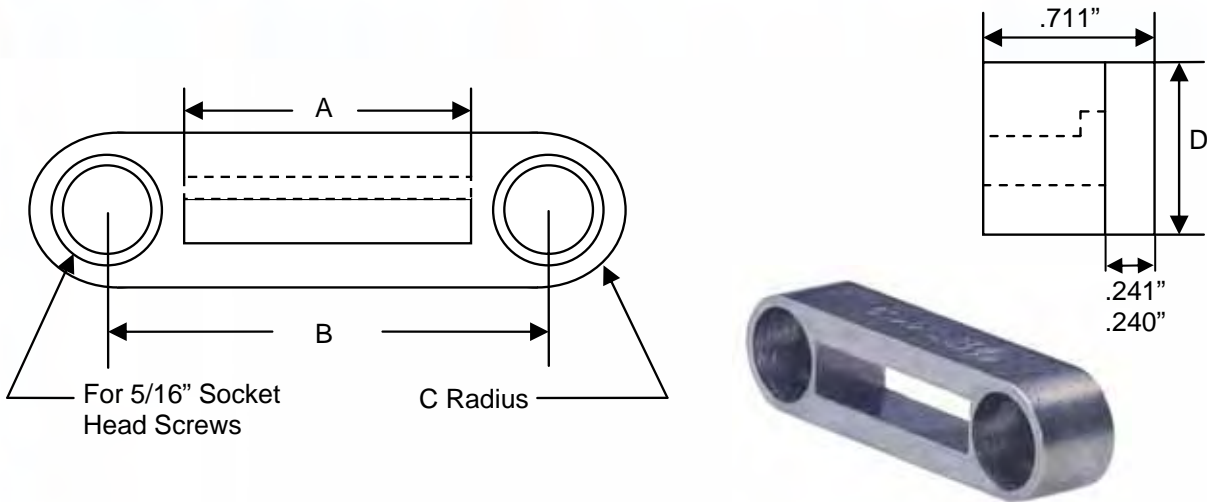
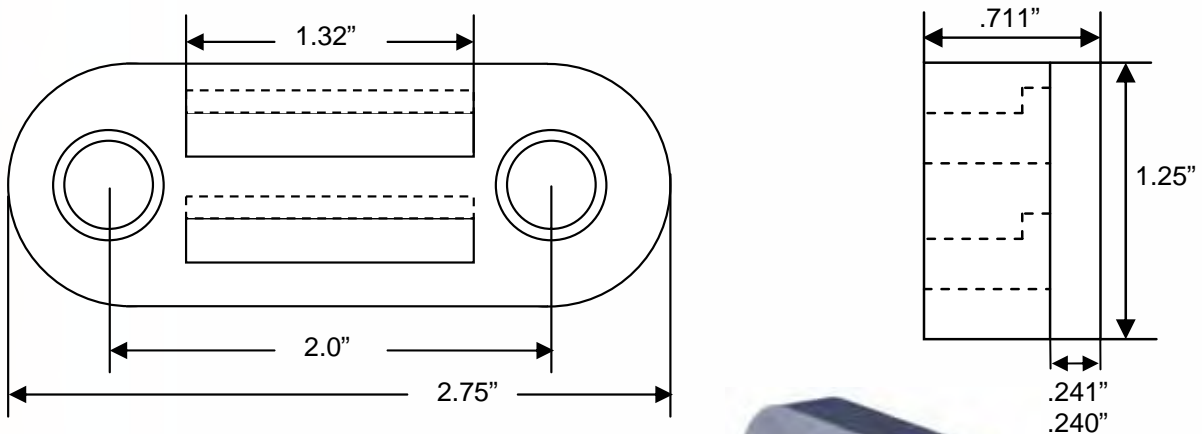


Retainers



L-Shaped Type Retainers

Retainer	A	B	C	D	Type Style (Holder Capacity)
CMM101	1.31"	2.00"	.31"	.62"	CMM103 (7), CMM164 (8), CMM512 (8), CMM518 (8)
CMM510	1.64"	2.31"	.31"	.62"	CMM164 (10), CMM512 (10), CMM518 (10)
CMM412	2.25"	2.94"	.38"	.75"	CMM103 (12), CMM125 (18)
CMMRN18	1.10"	2.00"	.38"	.75"	CMM018 (7)

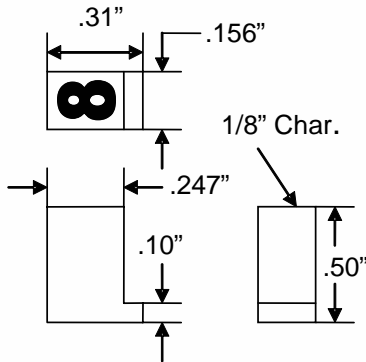


CMM106/CMM107 (retainer & backing plate set) holds (8) in each row of CMM512, CMM164, CMM518, and (7) in each row of CMM103.

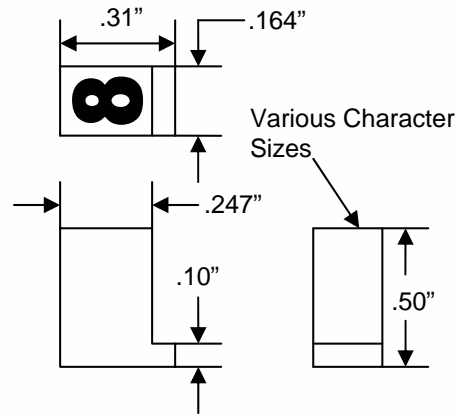
L-Shaped Type



CMM018 -1/8" character fits retainers CMMRN18, CMMRN18R1900 and CMMRN18R7810



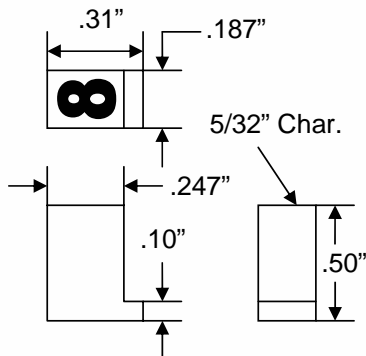
CMM518-3/16" character,
CMM164-5/32" character and
CMM512-1/8" character fits retainers
CMM101, CMM106, CMM510



MULTI-CHARACTER SEGMENT DIES AVAILABLE

CMT can manufacture any configuration of multi-character stamps for quick and easy change over of part numbers or codes.

CMM103 -5/32" character fits retainers CMM101, CMM412 and CMM106



CMM125 -1/8" character fits retainers CMM412

