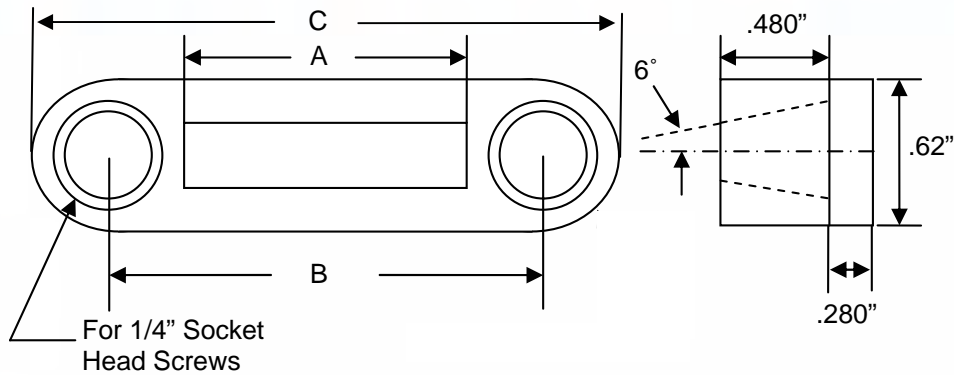


Retainers

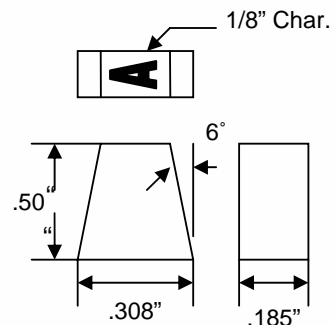


Wedge Shaped Type Retainers

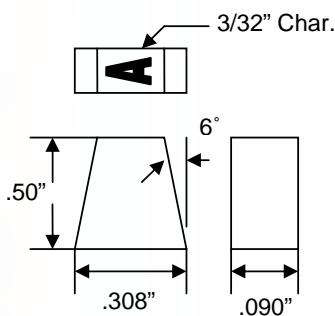
Retainer	A	B	C	Type Style (holder capacity)
CMM3	.562"	1.00"	1.50"	CMM180 (3), CMM090 (6)
CMM5	.936"	1.38"	1.88"	CMM180 (5), CMM090 (10)
CMM7	1.310"	1.75"	2.25"	CMM180 (7), CMM090 (14)
CMM9	1.683"	2.25"	2.75"	CMM180 (9), CMM090 (18)



CMM180

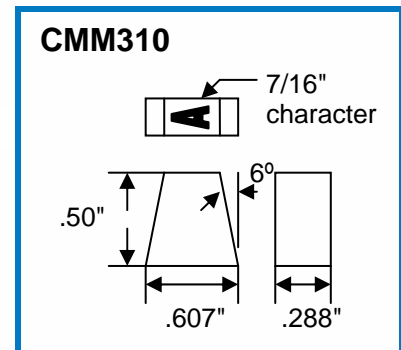
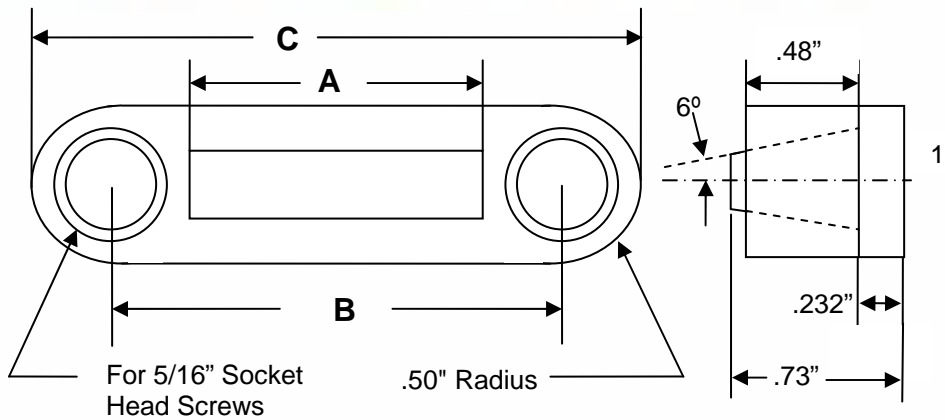


CMM090



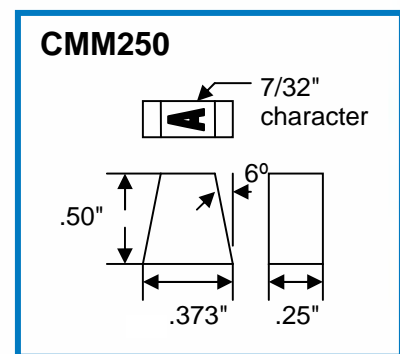
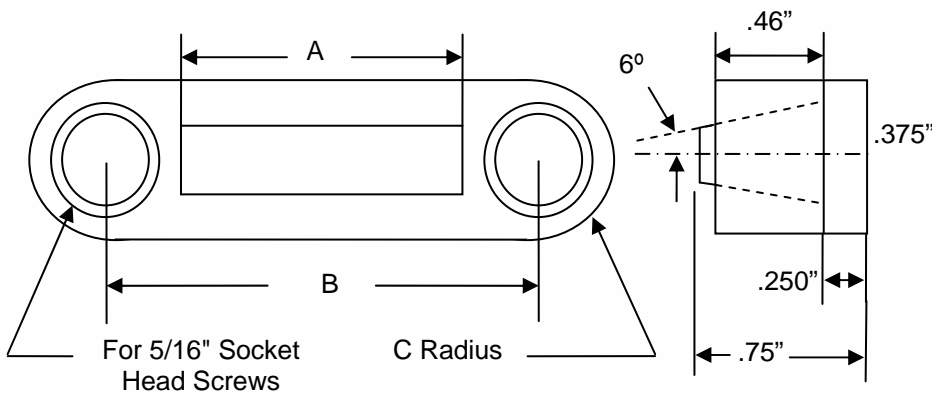
From A, B and C to your logo, CMT can engrave any marking legend onto custom die segments. For use in a stamping press or retainer system.

Retainers



Wedge Type Retainer for 7/16" Character

Retainer	A	B	C	Type Style (Holder Capacity)
CMM301	1.44"	2.00"	2.94"	CMM310 (5)
CMM306	1.73"	2.25"	3.25"	CMM310 (6)
CMM308	2.31"	3.06"	3.81"	CMM310 (8)



Wedge Type Retainer for 7/32" Character

Retainer	A	B	C	Type Style (Holder Capacity)
CMM50	1.25"	1.81"	.31"	CMM250 (5)
CMM54	2.265"	2.88"	.38"	CMM250 (9)