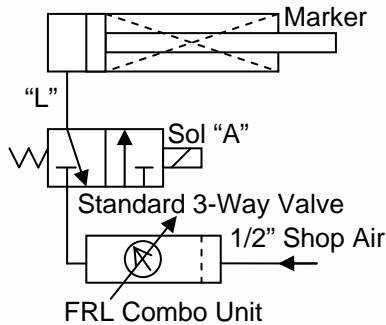


## Suggested Pneumatic Controls

### Single Acting: Model 88 and 98

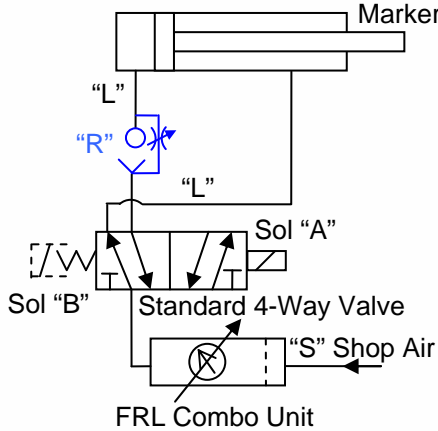


"L" Tubing sizes  
Model 88 – 3/8"  
Model 98 – 1/2"

*Electrical sequence for spring return valve*

1. To advance marker energize solenoid "A"
2. To return marker de-energize solenoid "A". Spring in marker returns ram after pressure is exhausted.

### Double Acting: Model 78, 288, 298, and Slide-A-Mark



"L" Tubing Sizes  
Model 78 and 288 – 3/8"  
Model 298 – 1/2"  
Slide-A-Mark – 1/2"

"S" Shop Air  
Model 78 – 3/8"  
Model 288 and 298 – 1/2"  
Slide-A-Mark – 1/2"

*Electrical Sequence for double solenoid valve.*

1. To advance marker energize solenoid "A".
2. To return marker and reset – de-energize solenoid "A" and energize solenoid "B".

*Electrical sequence for spring return valve.*

1. To advance marker – energize solenoid "A".
2. To return marker and reset – de-energize solenoid "A" after part is marked.

*Speed control adjustment (not for use with Slide-A-Mark)*

Adjust speed control "R" to control speed of retract motion. DO NOT install speed control on forward (rod) port of marker,

\*Note: For most efficient operation, electrical signal energizing solenoid "A" should be very short, approximately .06 to .10 seconds.

## Retro-Fit Valve Pack – Fast and Easy Installation



Each Valve Pak Includes:

- High Air Flow Valve
- Filter, Regulator, Lubricator And Gage Unit
- Lock-Out, Air Shut-Off Valve
- Completely Assembled
- Exhaust Muffler
- Air Timed Return On Valve For Adjustable Instant response

Feature	Symbol	Example
Single Acting	RVPS	—RVPD-DC-NL
Double Acting	RVPD	
AC	-	_____
DC	DC	
Non-Lube	NL	