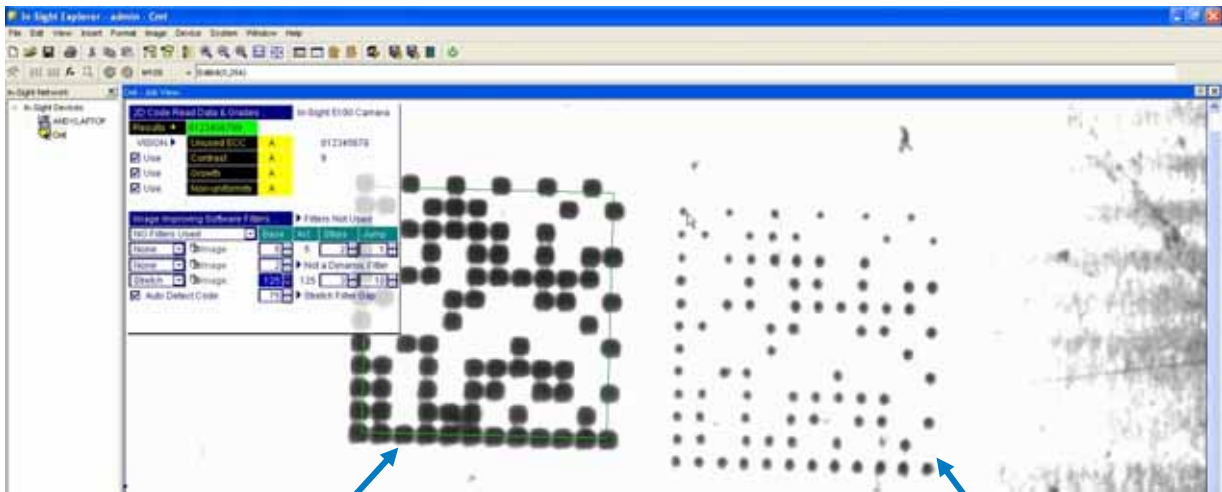


Square-Dot®

CMT's **patented high resolution marking process** to apply **2D/UID machine readable codes** to a variety of materials. This process scribes a matrix of small square cells into the material. The mark provides the best direct part reading with a vision system as the cells are filled in similar to a laser mark but much deeper and often with better contrast.



Square-Dot® UID/2D

All the rest (dot-peen)

The Square-Dot® process may be implemented by using either Signumeric 2D software (page 19) or an Industrial PC (page 24), preloaded with Signumeric 2D software.



The Square-Dot® patented process uses a diamond tip to draw squares on material to create a machine readable 2D/UID code. This technique creates both a depressed square and a raised ridge as shown below. The "filled cell" reflections create a more defined matrix as shown above, and therefore, offers better readability.



"successfully read 10 out of 10 attempts on a rough aluminum casting with the hand-held reader." Per vision system manufacturer test.